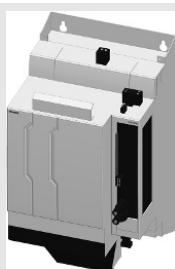
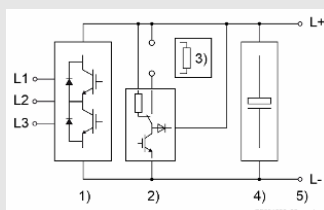


- Regenerative supply unit XVR

Regenerative supply unit XVR



Supply unit



- 1) Mains input with mains inverter
- 2) Braking transistor
- 3) Optional external braking resistor
- 4) DC bus capacitors
- 5) DC bus connection

Short type designation	1	2	3	4	5	6	7	8	9	10	11	12	13	14	15	16	17	18	19	20	21	22	23	24	25	26	27	28	29	30										
Example:	X	V	R	2	-	W	0	0	4	8	A	R	N	-	0	1	N	E	T	N	N	N	N	N	N	-	S	0	3	R	S	N	1	N	N	N	N	N	N	N
	①					②	③				④	⑤	⑥		⑦		⑧	⑨		⑩		⑪		⑫		⑬	⑭		⑮		⑯	⑰	⑱		⑲	⑳	㉑			

- ① **Product:**
1: X = ctrlX DRIVE
2: V = Supply unit
3: R = Regenerative
4: 2 = Generation 2; 1 = Generation 1
- ② **Cooling type:**
W = Air, internal
- ③ **Rated power:**
0019 = 19 kW
0048 = 48 kW
0072 = 72 kW
0100 = 100 kW
- ④ **Degree of protection, input voltage:**
A = IP20, 3 × AC 380 ... 500 V +10% -15%
- ⑤ **Other power section options:**
R = Integrated braking transistor and braking resistor
- ⑥ **Connector set:**
N = Without power connector set
- ⑦ **Control section:**
01 = ctrlX DRIVE
02 = ctrlX DRIVE^{plus}

Short type designation	1	2	3	4	5	6	7	8	9	1	2	3	4	5	6	7	8	9	2	1	2	3	4	5	6	7	8	9	3	1	2	3	4	5	6	7	8	9	4	
										0									0										0										0	
Example:	X	V	R	2	-	W	0	0	4	8	A	R	N	-	0	1	N	E	T	N	N	N	N	N	N	-	S	0	3	R	S	N	1	N	N	N	N	N	N	
	①					②	③				④	⑤	⑥		⑦		⑧	⑨	⑩		⑪		⑫			⑬	⑭	⑮	⑯	⑰	⑱				⑲	⑳	㉑			
⑧	Panel: N = Without panel A = With panel																																							
⑨	Communication: ET = Multi-Ethernet EX = Multi-Ethernet incl. ctrlX OS X3 = ctrlX CORE																																							
⑩	Hardware option 1: NN = Not equipped																																							
⑪	Hardware option 2: NN = Not equipped																																							
⑫	Hardware option 3: NN = Not equipped ET = Multi-Ethernet																																							
⑬	Runtime type: S = Standard																																							
⑭	Runtime version: 02 = Version 02 (XVR1) 03 = Version 03 (XVR2) 04 = Version 04 (XVR2) 05 = Version 05 (XVR2)																																							
⑮	Runtime release: RS = Standard (current release)																																							
⑯	Export licenses required: N = No																																							
⑰	Protocol - communication: 0 = defined via ctrlX CORE apps (XVR2) 1 = Sercos III 2 = EtherCAT (SoE) 3 = EtherCAT (CoE) 4 = PROFINET IO																																							
⑱	Technology Function: NNN = None TE1 = Uploading/programming Technology Apps (XVR2) TX1 = Uploading/programming Technology Apps incl. LIBs (Bosch Rexroth libraries) (XVR2)																																							
⑲	Scope of functions, Runtime: N = DRIVE Runtime P = DRIVE Runtime Productivity																																							
㉑	Scope of functions, SafeMotion: N = None																																							

Short type designation	1	2	3	4	5	6	7	8	9	1	1	2	3	4	5	6	7	8	9	2	1	2	3	4	5	6	7	8	9	3	1	2	3	4	5	6	7	8	9	4
										0										0										0									0	
Example:	X	V	R	2	-	W	0	0	4	8	A	R	N	-	0	1	N	E	T	N	N	N	N	N	N	-	S	0	3	R	S	N	1	N	N	N	N	N	N	
	①					②	③				④	⑤	⑥		⑦		⑧	⑨		⑩		⑪		⑫			⑬	⑭		⑮		⑯	⑰	⑱		⑲	⑳	㉑		
㉑	Other design: NN = None																																							