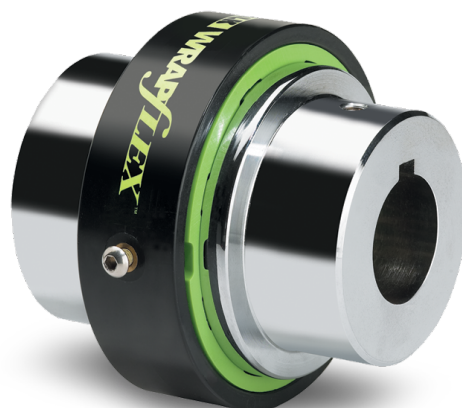




FALK® WRAPFLEX® COUPLINGS

PART NUMBER GUIDE SHEETS



Part Number Sheet Wrapflex® Couplings

R-10: Nylon Cover with standard element.

| Complete Coupling | | | Components | | | | | | |
|-------------------|---------------|-----------|------------------|---------------------|---------------------------------|---------------------------|----------------|--|-------------------------------|
| Coupling Size | Both Hubs RSB | R Hub RSB | R Hub Rebore *** | R Hub Modify (Long) | Nylon Cover & Element Assembly* | Flex Element w/ Fasteners | Nylon Cover ** | Replacement Cover Fasteners (2 per Assy) | Cover Fasteners (Button Head) |
| 2 ^ | 3701861 | 3302297 | 3701833 | N/A | 3701853 | N/A | N/A | 2927918 | M3x8mm |
| 3 ^ | 3701862 | 3302298 | 3701834 | N/A | 3701854 | N/A | N/A | 297918 | M3x8mm |
| 4 ^ | 3701863 | 3302299 | 3701835 | N/A | 3701855 | N/A | N/A | 2927924 | M4x8mm |
| 5 ^ | 0789024 | 0359831 | 0789000 | 0789364 | 3701475 | 0789006 | 0360571 | 2919837 | M4x8mm |
| 10 ^ | 0789025 | 0359832 | 0789001 | 0789365 | 3701476 | 0789007 | 0360572 | 2919838 | M4x10mm |
| 20 ^ | 0789026 | 0359833 | 0789002 | 0789366 | 3701477 | 0789008 | 0360573 | 2919842 | M6x16mm |
| 30 | 0789027 | 0359834 | 0789003 | 0789367 | 3701478 | 0789009 | 0436990 | 2919842 | M6x16mm |
| 40 | 0789028 | 0359835 | 0789004 | 0789368 | 3701479 | 0789010 | 0436991 | 2921012 | M8x20mm |
| 50 | 0789029 | 0359836 | 0789005 | 0789369 | 3701480 | 0789011 | 0436992 | 2921014 | M8x25mm |
| 60 | N/A | 3301259 | 3700217 | 3700229 | N/A | 3700220 | N/A | 2921227 | M10x25mm |
| 70 | N/A | 3301260 | 3700218 | 3700230 | N/A | 3700221 | N/A | 2921227 | M10x25mm |
| 80 | N/A | 3301261 | 3700219 | 3700231 | N/A | 3700222 | N/A | 2921227 | M10x25mm |

Order Editor Notes:

- Unless otherwise specified, 2R thru 50R are furnished for clearance fit with 2 "metric" setscrews
- 60R thru 80R hubs are furnished for interference fit with one setscrew as standard

Additional Notes:

- * Bill of materials consists of:
 - Flexible element with 2 cover fasteners
 - Nylon cover

** Part numbers represent Nylon cover no flex elements.
^ Hub materials, high strength sintered steel , size 2R to 20R.
*** "R" Hub re-bore part number is reference only, requires additional digits for specific non-stock bores.

Standard Bore Wrapflex “R10” Couplings

INCH BORE (Clearance Fit) Sintered Steel (PM) HUBS

| HUB SIZE | | 2R | 3R | 4R | 5R | 10R | 20R |
|--|--------------------|---------|---------|---------|---------|--|---------|
| Rough Bore | | 3302297 | 3302298 | 3302299 | 0359831 | 0359832 | 0359833 |
| Hub Rebore | | 3701833 | 3701834 | 3701835 | 0789000 | 0789001 | 0789002 |
| Bore Tol. +0.0010 -0.0000 | BORE KEYWAY | | | | | | |
| | 0.3125 1/16 x 1/32 | 3302501 | | | | GREY BOX Exceeds minimum bore capacity | |
| | 0.3750 3/32 x 3/64 | 3302502 | 3302505 | | | | |
| | 0.5000 1/8 x 1/16 | 3302503 | 3302506 | 3302510 | | | |
| | 0.6250 3/16 x 3/32 | 3701869 | 3302507 | 3302511 | 0789330 | | |
| | 0.7500 3/16 x 3/32 | 3302504 | 3302508 | 3302512 | 0789331 | 0789337 | |
| | 0.8750 3/16 x 3/32 | 3701870 | 3701871 | 3302359 | 0789332 | 0789338 | |
| | 0.9375 1/4x 1/8 | | | | | | |
| | 1.0000 1/4 x1/8 | | 3302509 | 3302513 | 0789333 | 0789339 | 3700199 |
| | 1.1250 1/4 x1/8 | | 3701872 | 3701873 | 0789334 | 0789340 | 3700186 |
| | 1.2500 1/4 x 1/8 | | | 3701880 | 0789335 | 0789341 | 3700187 |
| | 1.3750 5/16 x 5/32 | | | 3701874 | 0789336 | 0789342 | 0789345 |
| | 1.4375 3/8 x 3/16 | | | | 3702009 | 3702011 | 0794347 |
| | 1.5000 3/8 x 3/16 | | | | 3702010 | 0789343 | 0789346 |
| | 1.6250 3/8 x 3/16 | | | | 3100442 | 0789344 | 0789347 |
| | 1.7500 3/8 x 3/16 | | | | | 0794086 | 0789348 |
| | 1.8750 1/2 x 1/4 | | | | | 3100443 | 0789452 |
| | 1.9375 1/2 x 1/4 | | | | | | 3700200 |
| | 2.0000 1/2 x 1/4 | | | | | | 0789349 |
| | 2.1250 1/2 x 1/4 | | | | | | 0789350 |
| Bore Tol. +0.0015 -0.0000 | 2.2500 1/2 x 1/4 | | | | | | 0794087 |
| | 2.3750 5/8 x 5/16 | | | | | | 3100444 |
| | 2.4375 5/8 x 5/16 | | | | | | |
| | 2.5000 5/8 x 5/16 | | | | | | |
| | 2.6250 5/8 x 5/16 | | | | | | |
| | 2.7500 5/8 x 5/16 | | | | | | |
| | 2.8750 3/4 x 3/8 | | | | | | |
| | 2.9375 3/4 x 3/8 | | | | | | |
| | 3.0000 3/4 x 3/8 | | | | | | |
| | 3.1250 3/4 x 3/8 | | | | | | |
| | 3.2500 3/4 x 3/8 | | | | | | |
| | 3.3750 7/8 x 7/16 | | | | | | |
| | 3.5000 7/8 x 7/16 | | | | | | |
| | 3.6250 7/8 x 7/16 | | | | | | |
| | 3.7500 7/8 x 7/16 | | | | | | |
| | 3.8750 1 x 1/2 | | | | | | |
| | 3.9375 1 x 1/2 | | | | | | |
| | 4.0000 1 x 1/2 | | | | | | |
| | 4.1250 1 x 1/2 | | | | | | |
| | 5.2500 1 1/4 x 5/8 | | | | | | |
| GREY BOX Exceeds hub maximum bore size (Note: For over max, bore condition, consult with coupling engineering 1-800-767-3539) | | | | | | | |

NOTE: CHECK MAINFRAME SYSTEM FOR CURRENT STOCK (IF ANY) OF THE FINISH BORED HUB P/N'S.
Order Editor Notes: Size 2R thru 50R hubs bored for clearance fit as standard and are furnished with 2 setscrews, 1 - over keyway and other 90°. Metric setscrews are standard per drawing 437454, FIG #3. Setscrews are included with bored hubs.

Part Number Sheet Wrapflex Couplings

R-10E: Coated steel cover with standard element.

| Complete Coupling | | | | Components | | | | | |
|-------------------|---------------|-----------|-----------------|---------------------|---------------------------------|---------------------------|-----------------------|--|-------------------------------|
| Coupling Size | Both Hubs RSB | R Hub RSB | R Hub Rebore*** | R Hub Modify (Long) | Steel Cover & Element Assembly* | Flex Element w/ Fasteners | Coated Steel Cover ** | Replacement Cover Fasteners (2 per Assy) | Cover Fasteners (Button Head) |
| 2 ^ | 3701865 | 3302297 | 3701833 | N/A | 3701857 | N/A | N/A | 2927918 | M3x8mm |
| 3 ^ | 3701866 | 3302298 | 3701834 | N/A | 3701858 | N/A | N/A | 2927918 | M3x8mm |
| 4 ^ | 3701867 | 3302299 | 3701835 | N/A | 3701859 | N/A | N/A | 2927924 | M4x8mm |
| 5 ^ | 0789036 | 0359831 | 0789000 | 0789364 | 3701481 | 0789006 | 0359845 | 2919837 | M4x8mm |
| 10 ^ | 0789037 | 0359832 | 0789001 | 0789365 | 3701482 | 0789007 | 0359846 | 2919838 | M4x10mm |
| 20 ^ | 0789038 | 0359833 | 0789002 | 0789366 | 3701483 | 0789008 | 0359847 | 2919842 | M6x16mm |
| 30 | 0789039 | 0359834 | 0789003 | 0789367 | 3701484 | 0789009 | 0359848 | 2919842 | M6x16mm |
| 40 | 0789040 | 0359835 | 0789004 | 0789368 | 3701485 | 0789010 | 0359849 | 2921012 | M8x20mm |
| 50 | 0789041 | 0359836 | 0789005 | 0789369 | 3701486 | 0789011 | 0359850 | 2921014 | M8x25mm |
| 60 | 3700223 | 3301259 | 3700217 | 3700229 | 3701487 | 3700220 | 3301262 | 2921227 | M10x25mm |
| 70 | 3700224 | 3301260 | 3700218 | 3700230 | 3701488 | 3700221 | 3301263 | 2921227 | M10x25mm |
| 80 | 3700225 | 3301261 | 3700219 | 3700231 | 3701489 | 3700222 | 3301264 | 2921227 | M10x25mm |

Order Editor Notes:

- Unless otherwise specified, 2R thru 50R are furnished for clearance fit with 2 "metric"
- 60R thru 80R hubs are furnished for interference fit with one setscrew as standard

Additional Notes:

* Bill of materials consists of:

- Flexible element with 2 cover fasteners
- Steel cover with complete marking and/or labels

** Part numbers represent steel cover.

^ Hub material, high strength sintered steel size 2R to 20R.

*** "R" Hub re-bore part number is reference only, requires additional digits for specific non-stock bores.

Standard Bore Wrapflex "R10" Couplings

INCH BORE (Clearance Fit) Steel HUBS

| HUB SIZE | | 2R | 3R | 4R | 5R | 10R | 20R | 30R | 40R | 50R | 60R | 70R | 80R | | | | |
|---------------------------------|-------------|-------------|---------|---------|---------|---------|---------|---|--|---------|---------|---------|---------|---------|---------|---------|--|
| Rough Bore | | 3302312 | 3302313 | 3302314 | 3302415 | 3302416 | 3302417 | 0359834 | 0359835 | 0359836 | 3301259 | 3301260 | 3301261 | | | | |
| Hub Rebore | | 3701837 | 3701838 | 3701839 | 3701917 | 3701918 | 3701919 | 0789003 | 0789004 | 0789005 | 3700217 | 3700218 | 3700219 | | | | |
| Bore Tol. +0.0010 -0.0000 | BORE | KEYWAY | | | | | | | | | | | | | | | |
| | 0.5000 | 1/8 x 1/16 | | | | | | | | | | | | | | | |
| | 0.6250 | 3/16 x 3/32 | | | | | | | | | | | | | | | |
| | 0.7500 | 3/16 x 3/32 | | | | | | | GREY BOX Exceeds minimum bore capacity | | | | | | | | |
| | 0.8750 | 3/16 x 3/32 | | | | | | | | | | | | | | | |
| | 0.9375 | 1/4 x 1/8 | | | | | | | | | | | | | | | |
| | 1.0000 | 1/4 x 1/8 | | | | | | | | | | | | | | | |
| | 1.1250 | 1/4 x 1/8 | | | | | | | | 3702012 | | | | | | | |
| | 1.2500 | 1/4 x 1/8 | | | | | | | 3702013 | | | | | | | | |
| | 1.3750 | 5/16 x 5/32 | | | | | | | 3702014 | | | | | | | | |
| | 1.4375 | 3/8 x 3/16 | | | | | | | | | | | | | | | |
| | 1.5000 | 3/8 x 3/16 | | | | | | | | | | 3700188 | 3702015 | | | | |
| | 1.6250 | 3/8 x 3/16 | | | | | | | | | | 3700189 | 3700190 | | | | |
| | 1.7500 | 3/8 x 3/16 | | | | | | | | | | 0789351 | 3700191 | | | | |
| | 1.8750 | 1/2 x1/4 | | | | | | | | | | | 0789352 | 0789357 | | | |
| | 1.9375 | 1/2 x 1/4 | | | | | | | | | | | 3700201 | 3700202 | | | |
| | 2.0000 | 1/2 x 1/4 | | | | | | | | | | | 0789353 | 0789358 | 3701709 | | |
| | 2.1250 | 1/2 x 1/4 | | | | | | | | | | | 0789354 | 3700192 | 3702016 | | |
| | 2.2500 | 1/2 x 1/4 | | | | | | | | | | | 0789355 | 0789359 | 3700194 | | |
| | 2.3750 | 5/8 x 5/16 | | | | | | | | | | | 0789356 | 3700193 | 0794090 | | |
| | 2.4375 | 5/8 x 5/16 | | | | | | | | | | | | | | | |
| 2.5000 | 5/8 x 5/16 | | | | | | | | | | | | | 0789360 | 3700195 | | |
| 2.6250 | 5/8 x 5/16 | | | | | | | | | | | | | 3701702 | | | |
| 2.7500 | 5/8 x 5/16 | | | | | | | | | | | | | 0794088 | 0789361 | 3700196 | |
| 2.8750 | 3/4 x 3/8 | | | | | | | | | | | | | 3100445 | 0789453 | 0794091 | |
| 2.9375 | 3/4 x 3/8 | | | | | | | | | | | | | 0789362 | | | |
| 3.0000 | 3/4 x 3/8 | | | | | | | | | | | | | 0789363 | | 3700197 | |
| 3.1250 | 3/4 x 3/8 | | | | | | | | | | | | | | | | |
| 3.2500 | 3/4 x 3/8 | | | | | | | | | | | | | 0794089 | | 0794092 | |
| 3.3750 | 7/8 x 7/16 | | | | | | | | | | | | | 3100446 | | 3700198 | |
| 3.4375 | 7/8 x 7/16 | | | | | | | GREY BOX Exceeds hub maximum bore size (Note: For over max, bore condition, consult with coupling engineering 1-800-767-3539) | | | | | | 3702017 | | | |
| 3.6250 | 7/8 x 7/16 | | | | | | | | | | | | | 0794093 | | | |
| 3.7500 | 7/8 x 7/16 | | | | | | | | | | | | | 0794094 | | | |
| 3.8750 | 1 x 1/2 | | | | | | | | | | | | | 3701683 | | | |
| 3.9375 | 1 x 1/2 | | | | | | | | | | | | | | | | |
| 4.0000 | 1 x 1/2 | | | | | | | | | | | | | 0794095 | | | |
| 4.1250 | 1 x 1/2 | | | | | | | | | | | | | 3701691 | | | |
| 5.2500 | 1-1/4 x 5/8 | | | | | | | | | | | | | | | | |
| 6.1250 | 1-1/2 x 3/4 | | | | | | | | | | | | | | | | |
| 7.2500 | 1 3/4 x 7/8 | | | | | | | | | | | | | | | | |

NOTE: CHECK MAINFRAME SYSTEM FOR CURRENT STOCK (IF ANY) OF THE FINISH BORED HUB P/N's. Size 2R thru 50R hubs bored for clearance fit as standard and are furnished with 2 setscrews, 1 - over keyway and other 90°. Metric setscrews are standard per drawing 437454, FIG #3. Setscrews are included with bored hubs.



Motion Control Solutions
Regal Rexnord

[regalrexnord.com](https://www.regalrexnord.com)

The proper selection and application of products and components, including assuring that the product is safe for its intended use, are the responsibility of the customer. To view our Application Considerations, please visit <https://www.regalrexnord.com/Application-Considerations>. To view our Standard Terms and Conditions of Sale, please visit <https://www.regalrexnord.com/Terms-and-Conditions-of-Sale> (which may redirect to other website locations based on product family).

"Regal Rexnord" is not indicative of legal entity. Refer to product purchase documentation for the applicable legal entity. Regal Rexnord, Berg, Falk, Highfield, Link-Belt, Rex, Stearns, and Wrapflex are trademarks of Regal Rexnord Corporation or one of its affiliated companies.

© 2012, 2022 Regal Rexnord Corporation, All Rights Reserved. MCB22149E • Form# 081-000

