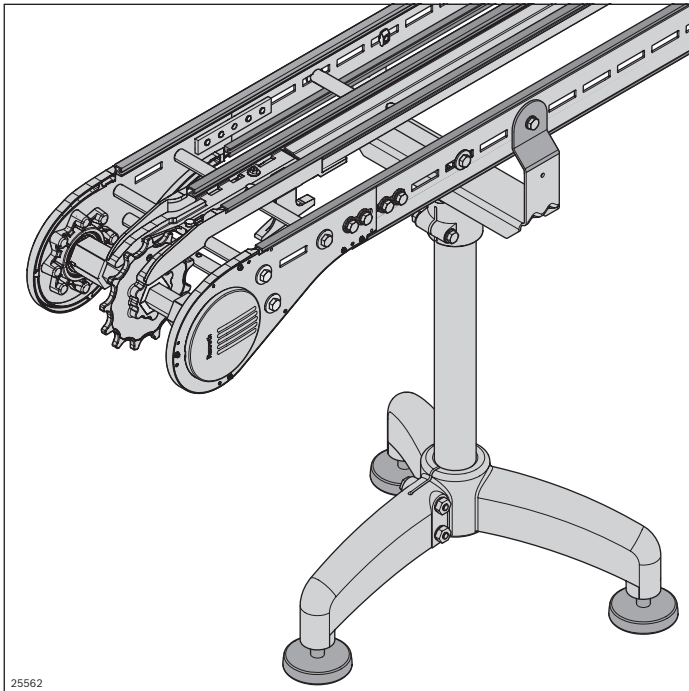


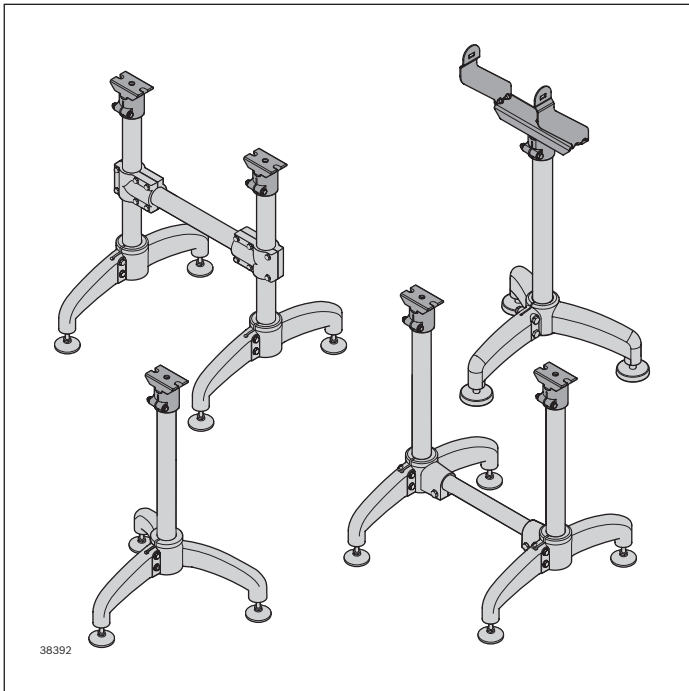
Stainless steel system (STS)

VarioFlow *plus*



- ▶ FDA-compliant materials and easy-to-clean surfaces fulfill the high standards in the areas of the food & packaging and health & care industries where hygiene is crucial
- ▶ Mounting of sliding rails without rivets or the need to machine the track bearing surfaces
- ▶ Minimal sliding rail interruptions
- ▶ FDA-compliant, low-friction materials for components subject to constant friction
- ▶ Standardized components that can be used universally
- ▶ Continuous product range in the sizes 65, 90, 120, 160, 240, 320

Leg sets STS



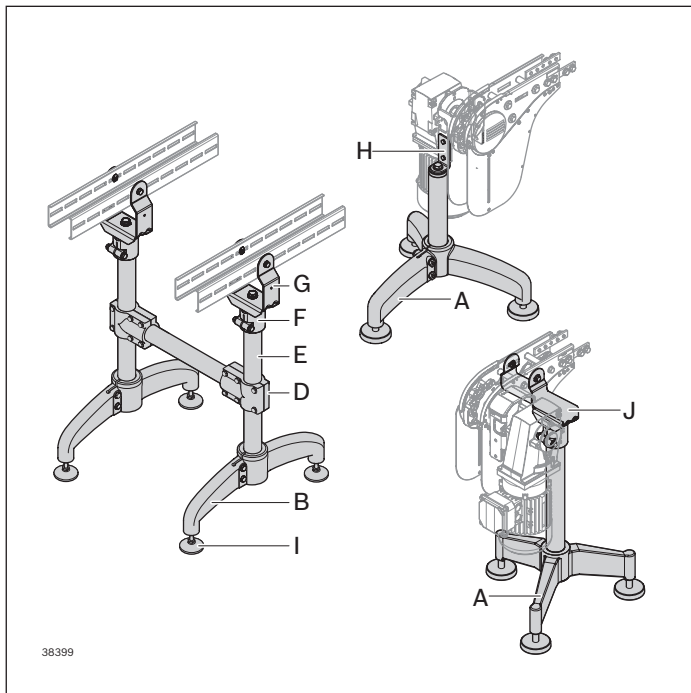
- ▶ Fast, simple leg set adjustment thanks to clever product details
- ▶ Few screwed connections
- ▶ Easy to clean thanks to ample draining surfaces
- ▶ Bore for the easy attachment of drop trays, protective devices, etc.
- ▶ Supports can also be used in conjunction with sections AL



Leg set STS

182

Leg set STS



- For dowelling the leveling feet (**I**) drill guides are available on the underside
- Easy-to-clean design with draining surfaces

Scope of delivery:

- Including fastening material

Material:

- **A, B, C, D, F:** PA
- **E, G, J:** Non-rusting steel 1.4301
- **H:** Non-rusting steel 1.4301 with PA
- **I:** STS with PA

The chain conveyor is placed on the ground by means of supports and fastened.

The support is constructed from single parts:

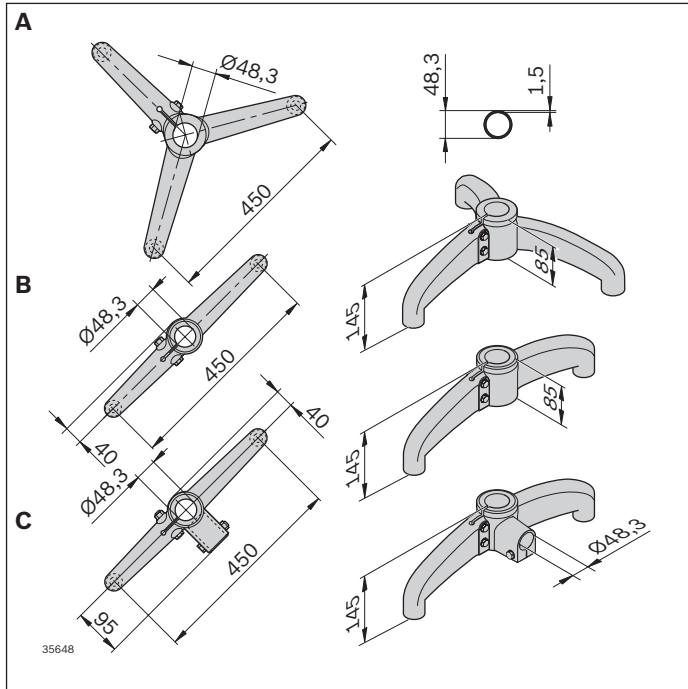
Foot in three different versions (**A, B, C**) tube (**E**), flange (**F**) for mounting the holder and holder (**G**) for mounting the section profile.

It is imperative that a separate holder (**J**) is used to support the motors/drives. Holder (**H**) as an additional or optional support on the flange.

- Depending on the speed, accumulation behavior and weight, the supports are to be fixed at a distance of approx. 2 ... 3 m
- The leg sets for the aluminum system (see p. 116, 120) can also be used on the stainless steel system. The holders (**G+J**) can be connected directly to a strut profile 60x60 and a S12x30-T50 (MGE catalog **3 842 530 236**)
- Holders (**J+H**) can only be used for the system STS
- Holder (**G**) can also be used for ascending and descending conveyor sections (up to approx. 28°, depending on the return chain)
- Holder (**G**) with drill guide to fasten drip trays, trap guards for return chains etc., also suitable for section profile 60x60
- Due to stability reasons, cross reinforcements are absolutely necessary when using feet B and C

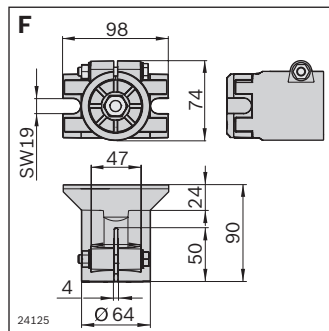
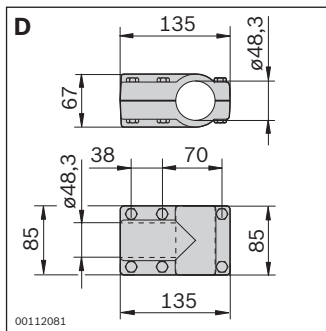
Condition on delivery:

- Assembly required



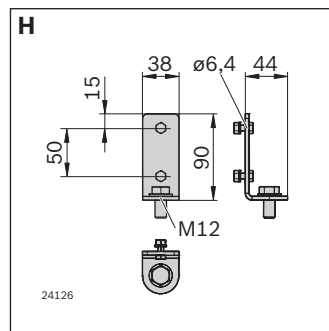
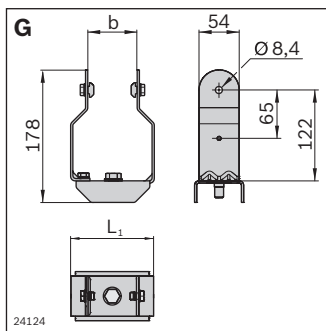
Foot STS	No.
Tripod (A)	1 3 842 533 307
Bipod (B)	1 3 842 533 308
Two-leg with flange (C)	1 3 842 533 309

Tube D48.3 x 1.5 STS (E)	L (mm)	No.
6 pcs	3000	3 842 533 901
1 pc	200 ... 3000	3 842 993 308/L



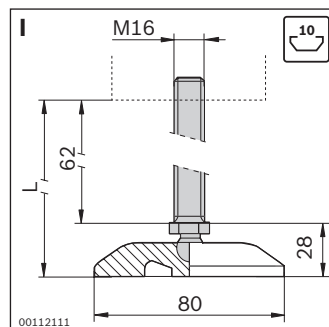
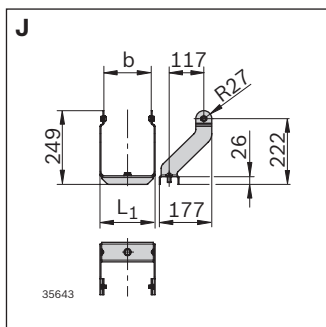
Cross connector (D)	No.
VFplus 80x80, black	1 3 842 533 306

Flange VFplus STS (F)	No.
VFplus support	Set 3 842 547 892



Holder STS (G)	b (mm)	L ₁ (mm)	No.
VFplus 65 support STS	65	111	Set 3 842 546 658
VFplus 90 support STS	90	136	Set 3 842 546 659
VFplus 120 support STS	120	166	Set 3 842 546 660
VFplus 160 support STS	160	206	Set 3 842 546 661
VFplus 240 support STS	240	286	Set 3 842 546 662
VFplus 320 support STS	320	366	Set 3 842 546 663

STS motor leg set holder (H)	No.
VFplus	Set 3 842 549 365



Holder STS (J)	b (mm)	L ₁ (mm)	No.
VFplus 65 drive STS	65	91	Set 3 842 559 114
VFplus 90 drive STS	90	116	Set 3 842 559 115
VFplus 120 drive STS	120	146	Set 3 842 559 116
VFplus 160 drive STS	160	186	Set 3 842 559 117
VFplus 240 drive STS	240	266	Set 3 842 559 118
VFplus 320 drive STS	320	346	Set 3 842 559 119

Leveling foot (I)	No.
Adjustable M16x95	3 842 533 310