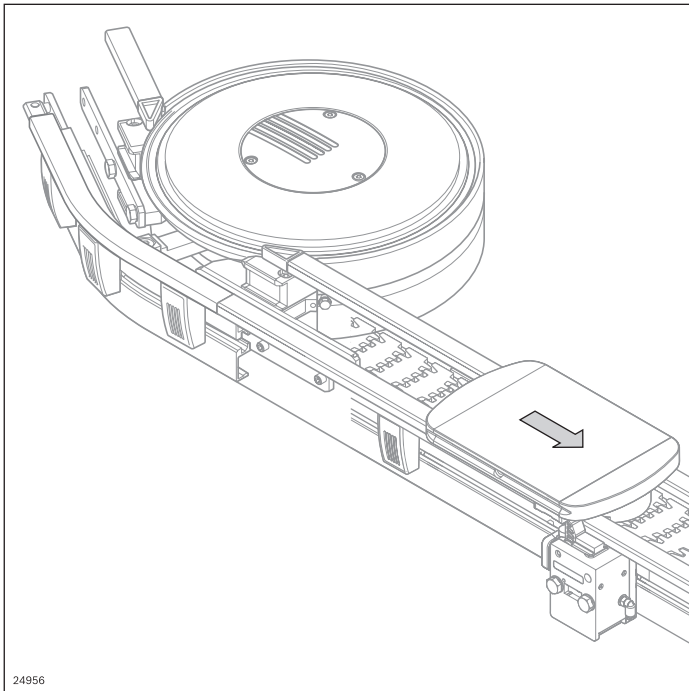


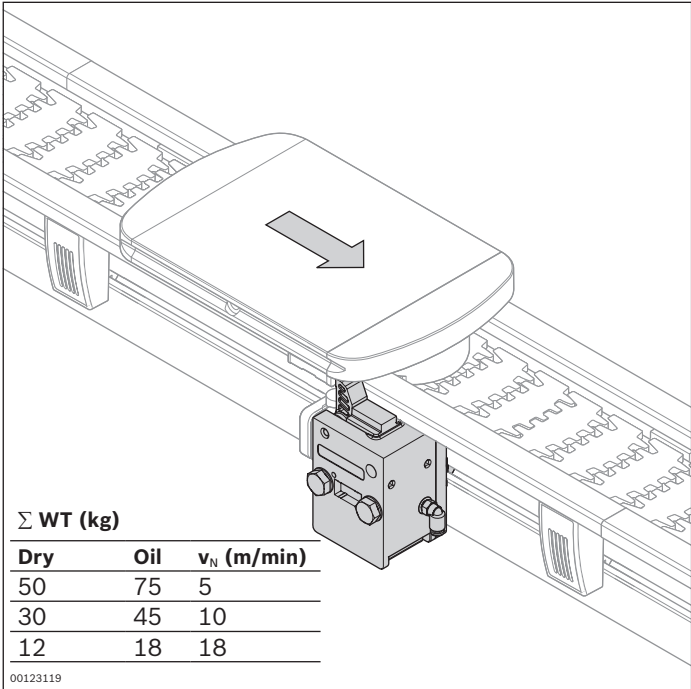
# Workpiece pallet system (WT)



- ▶ Secure transport of parts thanks to the modular design with comprehensive additional components
- ▶ Numerous components for control WT such as diverter, stopper, positioning unit, etc.
- ▶ Selection of wear pads with different materials
- ▶ Compatible with the identification system ID 15

# Stop gate VE-VF

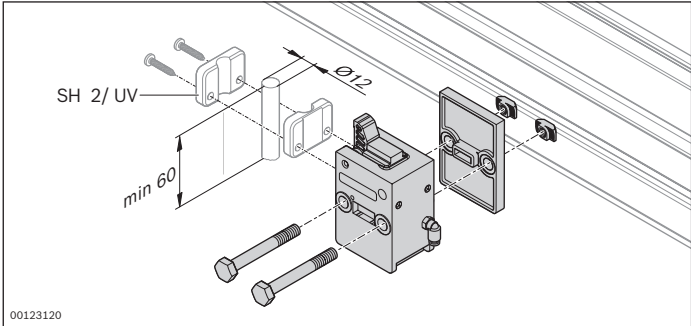
## Stop gate VE-VF/M



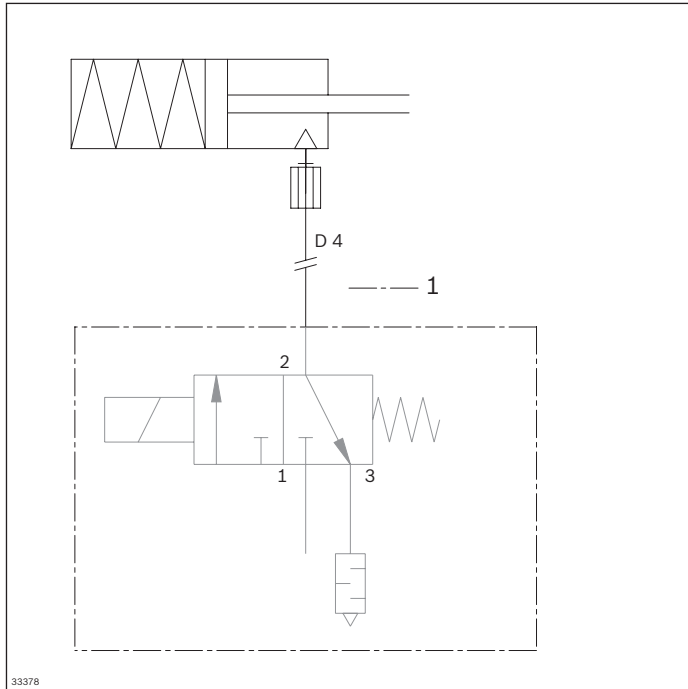
- Stop gate for securely stopping a workpiece pallet
- Suitable for retrofitting without disrupting the lateral guide
  - The stop gate can be installed in any position
  - Switch bracket for installation on stop gate see p. 254, max. accumulation load 50 kg
  - Available in two versions:
    - VE-VF for dry or oily ambient conditions
    - VE-VF/M for corrosive ambient conditions

- Scope of delivery:
- Including fastening parts (as shown)

- Material:
- Stop gate VE-VF: PA; black
  - Stop gate VE-VF/M: PA, gray,
- Functional components in the stop gate:
- Non-rusting steel 1.4301
  - Fastening material: Steel; zinc-plated



Stop gate	No.
VE-VF	3 842 528 852
VE-VF/M	3 842 559 135

**Circuit diagram**

1 Not included in the scope of delivery