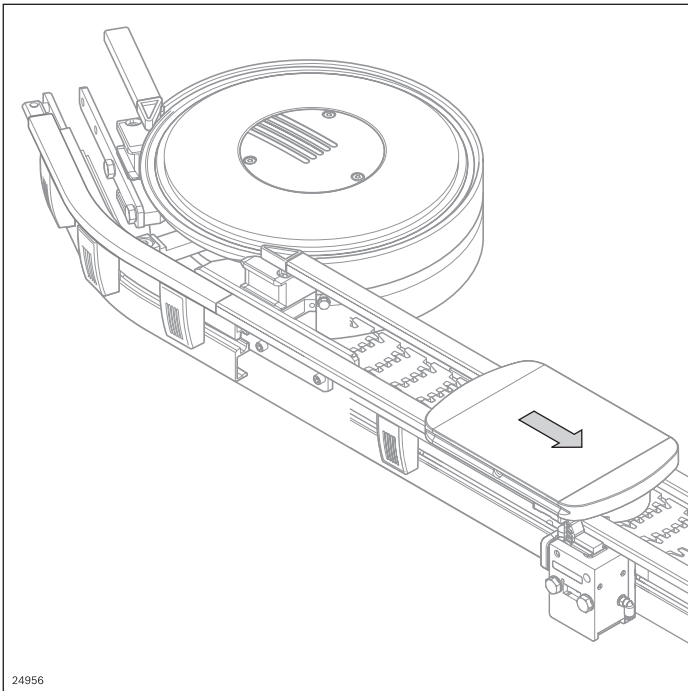


Workpiece pallet system (WT)



- ▶ Secure transport of parts thanks to the modular design with comprehensive additional components
- ▶ Numerous components for control WT such as diverter, stopper, positioning unit, etc.
- ▶ Selection of wear pads with different materials
- ▶ Compatible with the identification system ID 15

Switch bracket SH VF/U



- Switch bracket for 12 mm sensor
- Simple, fast mounting and replacement of the sensor without adjustment through flush installation with defined switching distance
- Changing the sensor is quick and easy by loosening a separate clamping screw
The switch bracket stays in position
- Inspection window to recognize the operating state of the sensor

- Suitable for retrofitting without disrupting the lateral guide
- The switch bracket can be installed in any position

Required accessories:

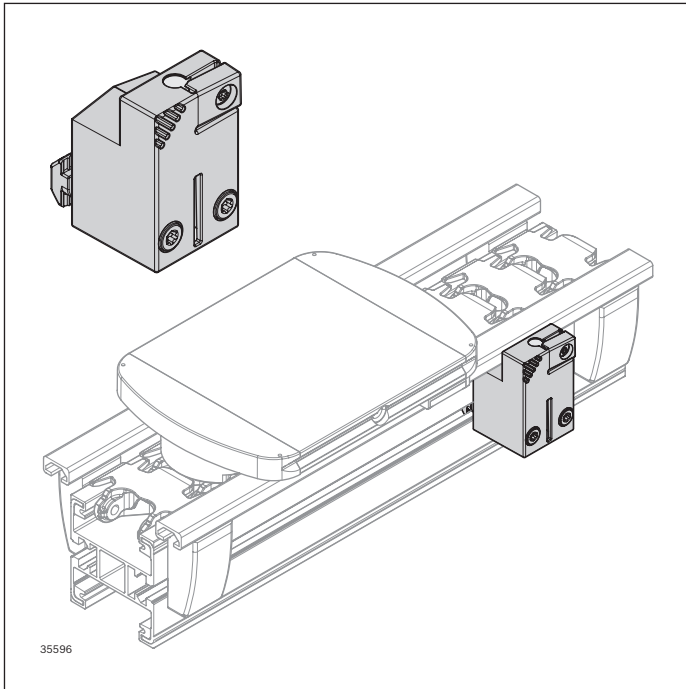
- Sensor M12 x 60, 3 842 558 990

Scope of delivery:

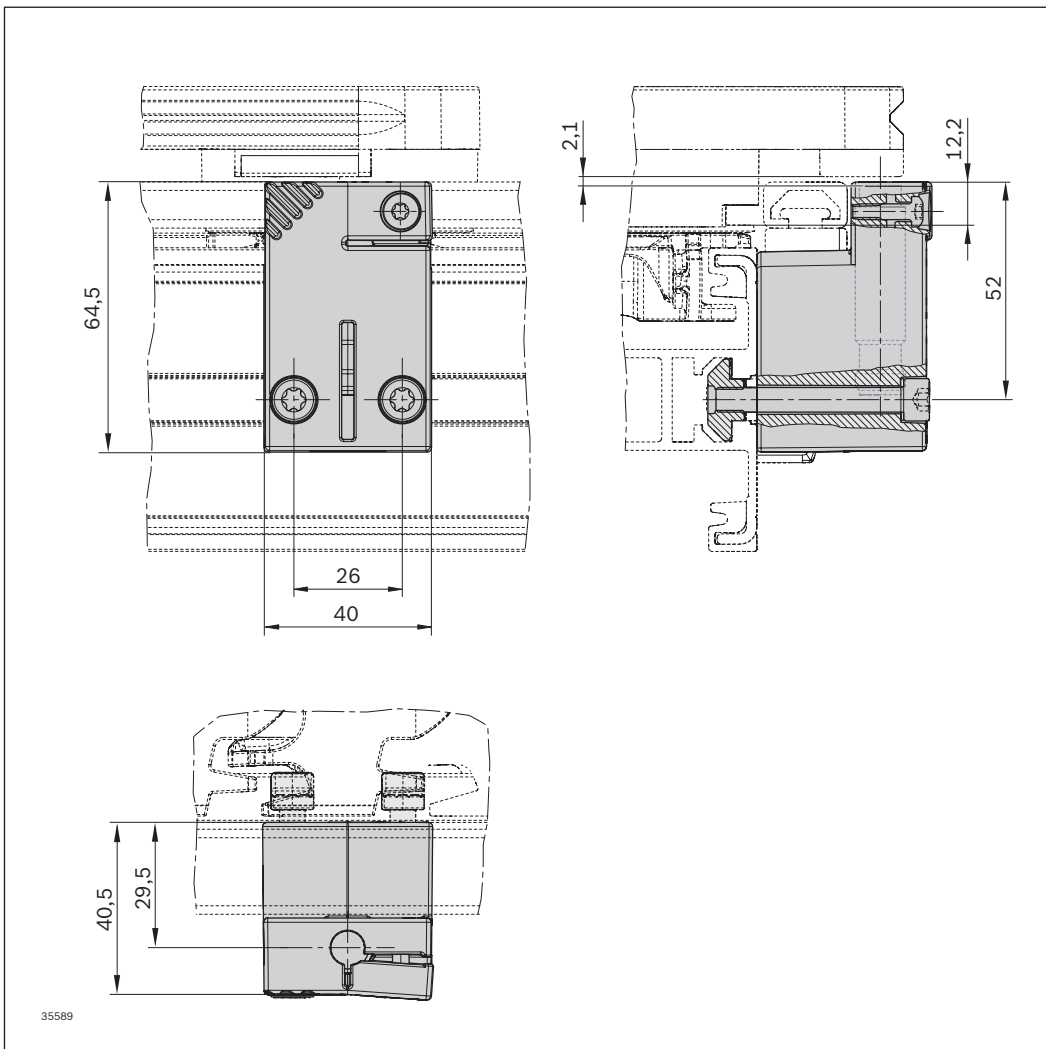
- Including fastening material

Material:

- Switch bracket: PA; black
- Fastening material: Steel; zinc-plated



Switch bracket	No.
SH VF/U	3 842 557 603



Switch bracket SH VF/UV



- Switch bracket for a 12 mm sensor, for installing on stop gate VE 2/VF
- Simple, fast mounting and replacement of the sensor without adjustment through flush installation with defined switching distance
- Changing the sensor is quick and easy by loosening a separate clamping screw
The switch bracket stays in position

- Can be attached to both sides of the stop gate VE 2/VF
- For querying the workpiece pallet position before and/or after the stop gate

Required accessories:

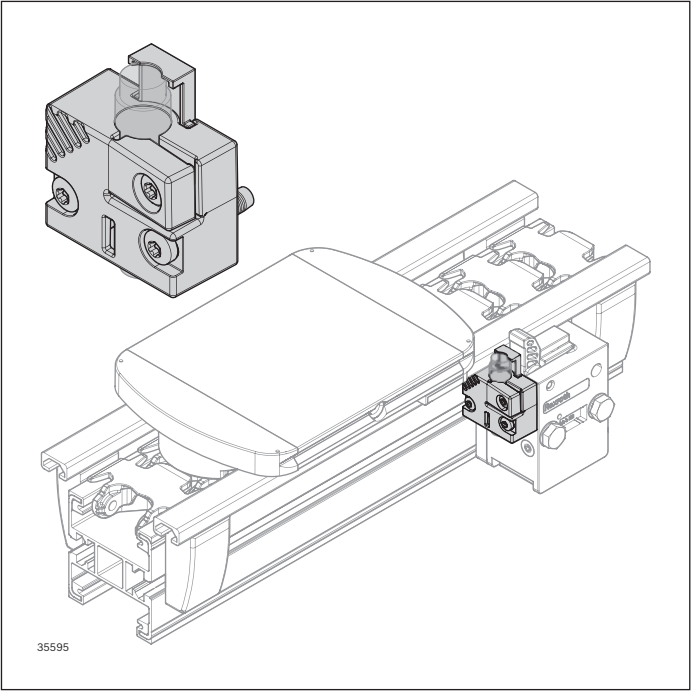
- Sensor M12 x 45, 3 842 557 633 or
M12 x 44, 3 842 549 813

Scope of delivery:

- Including fastening material

Material:

- Switch bracket: PA; black
- Fastening material: Steel; zinc-plated



Switch bracket	No.
SH VF/UV	3 842 557 601

