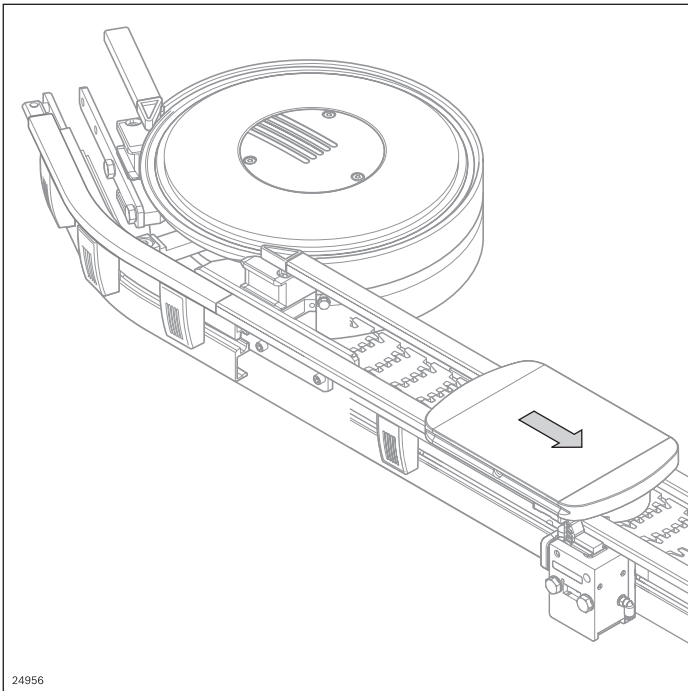
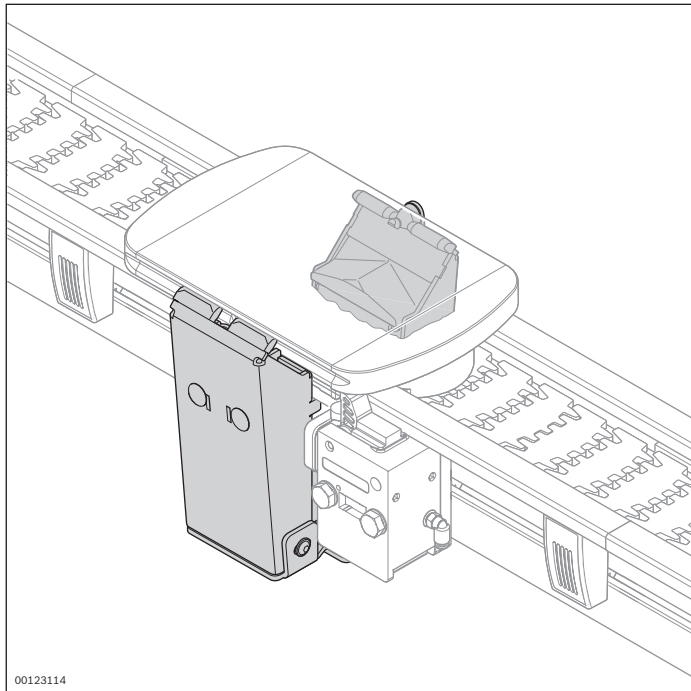


# Workpiece pallet system (WT)



- ▶ Secure transport of parts thanks to the modular design with comprehensive additional components
- ▶ Numerous components for control WT such as diverter, stopper, positioning unit, etc.
- ▶ Selection of wear pads with different materials
- ▶ Compatible with the identification system ID 15

## Positioning unit PE-VF/H



### Required accessories:

- 2 throttle check valves G 1/8" (not included in the scope of delivery)

### Scope of delivery:

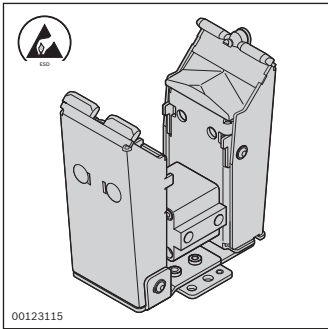
- Including fastening parts (as shown)

### Material:

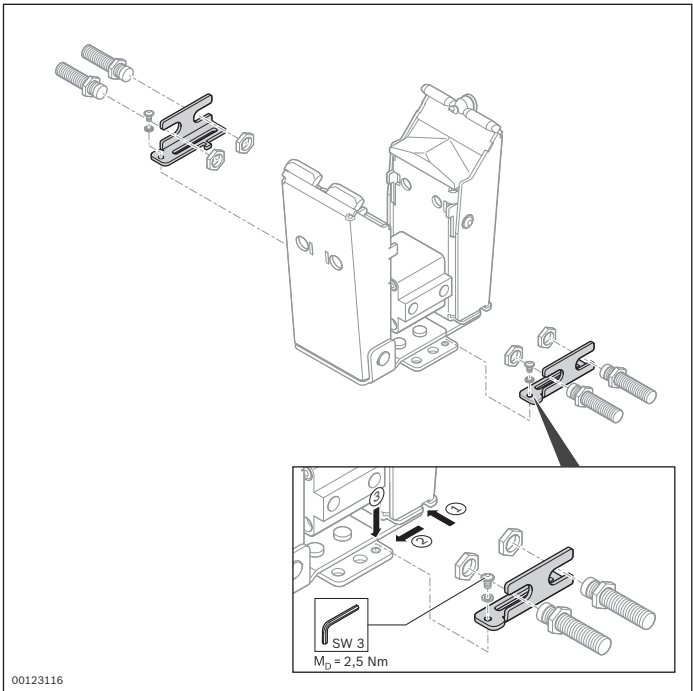
- Positioning unit: Stainless steel
- Fastening parts: Steel; galvanized
- Cover caps: PA
- Clamping claws: PU

The plier-shaped form of the positioning unit (PE) makes it highly resistant to dirt and shavings and thus suitable for dirty environments. The WT is lifted approx. 1 mm above the transport level, thus eliminating the load on the conveyor chain during processing.

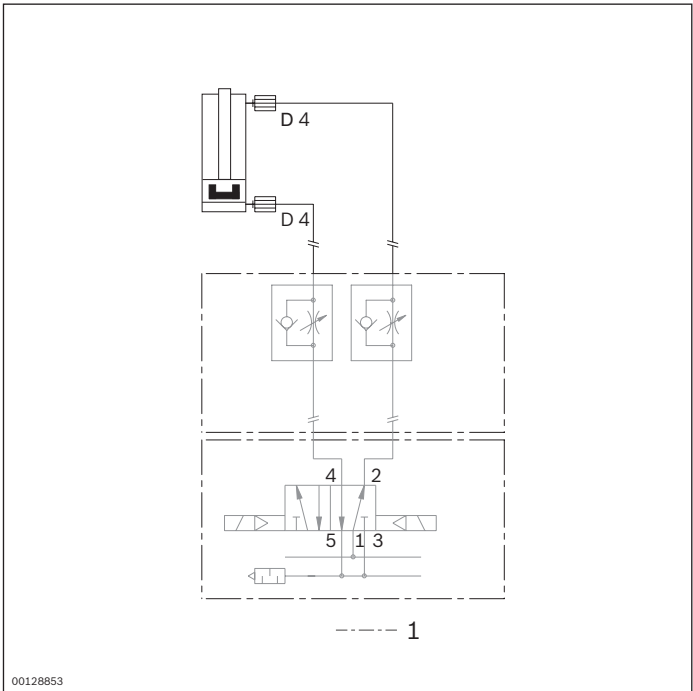
- Positioning accuracy in the direction of transport:  $\pm 0.15$  mm (transverse:  $\pm 0.1$  mm, height:  $\pm 0.1$  mm)
- Maximum vertical press force ( $p = 4$  bar): 400 N
- Maximum retention force ( $p = 4$  bar) in the direction of transport: 300 N
- Suitable for retrofitting without disrupting the lateral guide
- The switch bracket can be installed in any position
- Minimum length of the workpiece pallets in order to incorporate the positioning unit:  
Size 65: L = 125 mm  
size 90: L = 125 mm
- Two positioning units can be combined for workpiece pallets with L > 250 mm. For this, the positioning mandrel is removed from one of the PEs and the workpiece pallets are fitted with eccentric centering bushings by the customer
- Position inquiry with assembly kit and 2 proximity switches M12x1 on the housing (proximity switches not in the scope of delivery) or with **3 842 535 150** on the cylinder
- Max. torque in the pliers area: 60 Nm



| Positioning unit | No.           |
|------------------|---------------|
|                  | 3 842 532 762 |



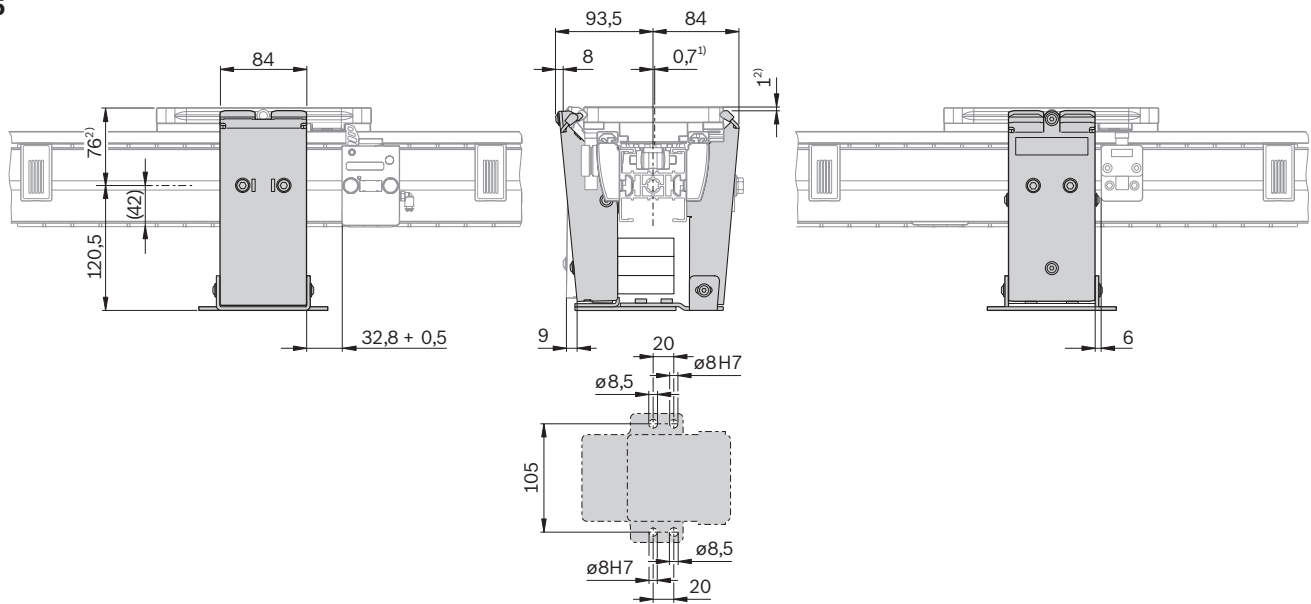
| Position monitoring kit | No.           |
|-------------------------|---------------|
|                         | 3 842 535 801 |



Circuit diagram

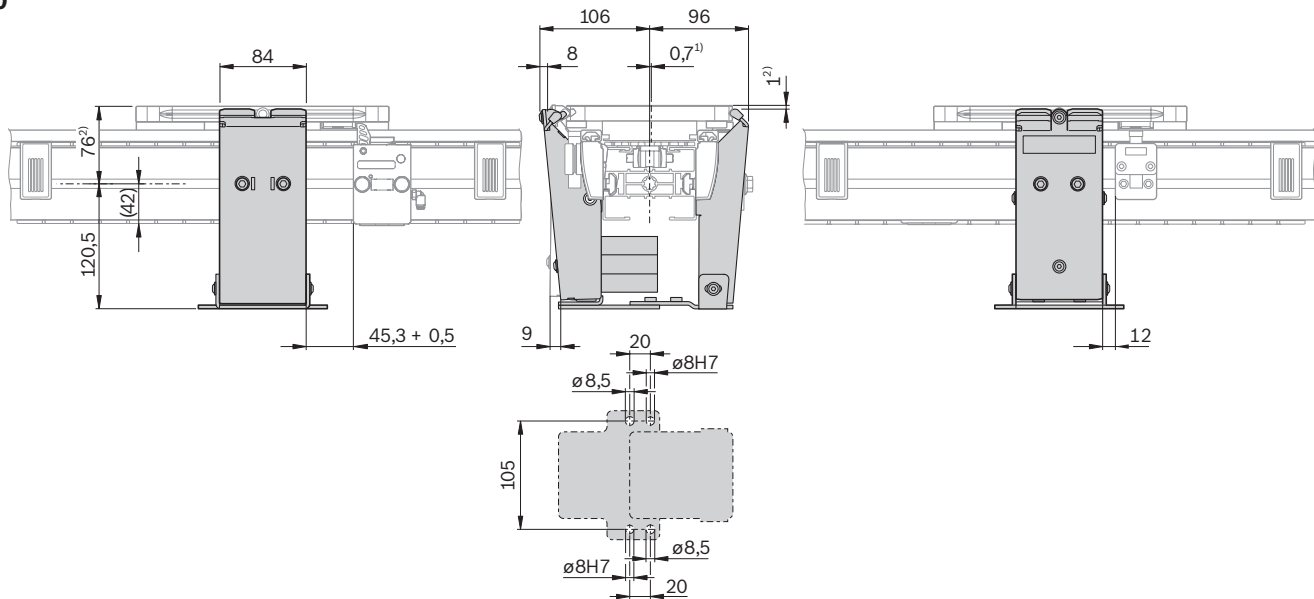
1 Not included in the scope of delivery

### VF 65



00123117

### VF 90



00123118

<sup>1)</sup> Center offset of the workpiece pallet when it is positioned

<sup>2)</sup> Height offset of the workpiece pallet when it is positioned

