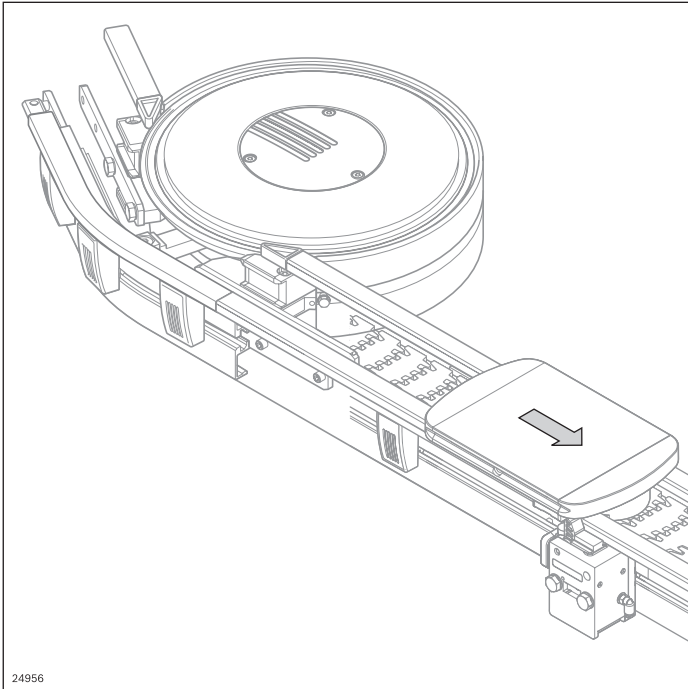
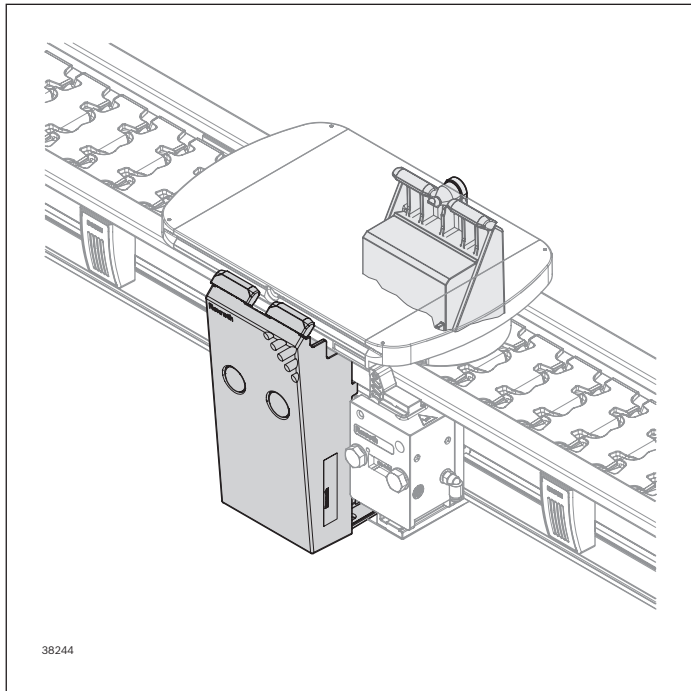


# Workpiece pallet system (WT)



- ▶ Secure transport of parts thanks to the modular design with comprehensive additional components
- ▶ Numerous components for control WT such as diverter, stopper, positioning unit, etc.
- ▶ Selection of wear pads with different materials
- ▶ Compatible with the identification system ID 15

# Positioning unit PE-VF/C



## Required accessories:

- 2x throttle check valve G 1/8"
- Position sensor:
  - 2x sensor M12x45, 3 842 557 633
  - 1x switch bracket SH 2/HQ-R, 3 842 557 606
  - 1x switch bracket SH 2/HQ-L, 3 842 557 607

## Scope of delivery:

- Including fastening parts (as shown)

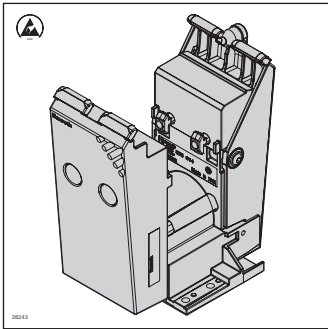
## Material:

- Positioning unit: Diecast aluminum
- Fastening parts: Steel; galvanized
- Cover caps: PA
- Clamping claws: PU

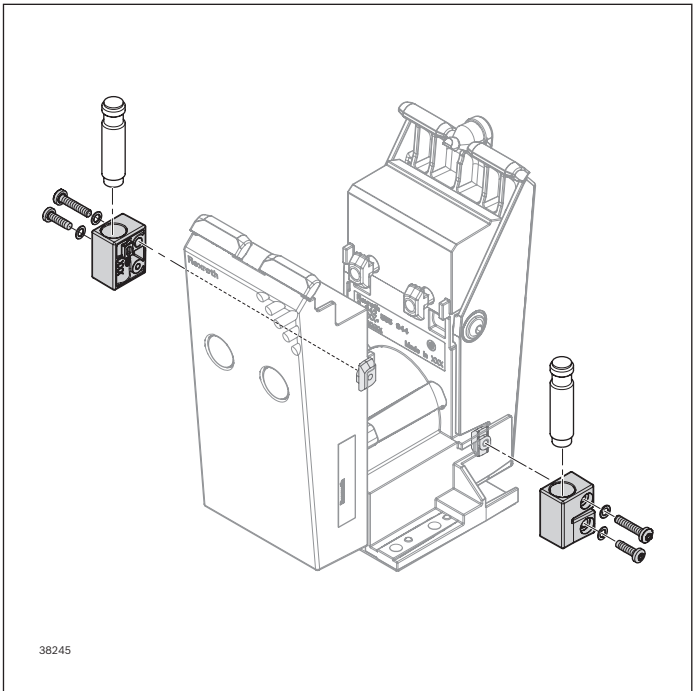
The positioning unit PE-VF/C is intended for use in clean ambient conditions. The WT is lifted approx. 1 mm above the transport level, thus eliminating the load on the conveyor chain during processing.

For rough ambient conditions, the positioning unit PE-VF/H is available.

- Positioning accuracy in the direction of transport:  $\pm 0.15$  mm (transverse:  $\pm 0.1$  mm, height:  $\pm 0.1$  mm)
- Maximum vertical press force ( $p = 4$  bar): 400 N
- Maximum retention force ( $p = 4$  bar) in the direction of transport: 300 N
- Maximum permissible torque in the plier area: 60 Nm
- Suitable for retrofitting without disrupting the lateral guide
- The switch bracket can be installed in any position
- Minimum length of the workpiece pallets in order to incorporate the positioning unit:
  - Size 65: L = 125 mm
  - size 90: L = 125 mm
- 2 positioning units can be combined for workpiece pallets with L > 250 mm. For this, the positioning mandrel is removed from one of the PEs and the workpiece pallets are fitted with eccentric centering bushings by the customer
- Position sensors (parts not included in the scope of delivery) with 2x sensor M12x45 (3 842 557 633) and 1x switch bracket each SH 2/HQ-R (3 842 557 606) and SH 2/HQ-L (3 842 557 607)

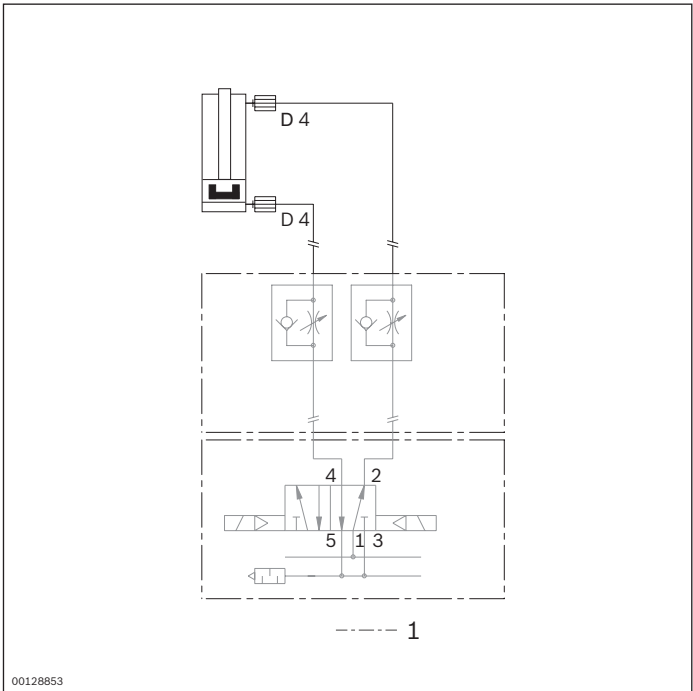


Positioning unit	No.
PE-VF/C	3 842 557 090



Position sensor	No.
M12x45 sensor	3 842 557 633
SH 2/HQ-R switch bracket	3 842 557 606
SH 2/HQ-L switch bracket	3 842 557 607

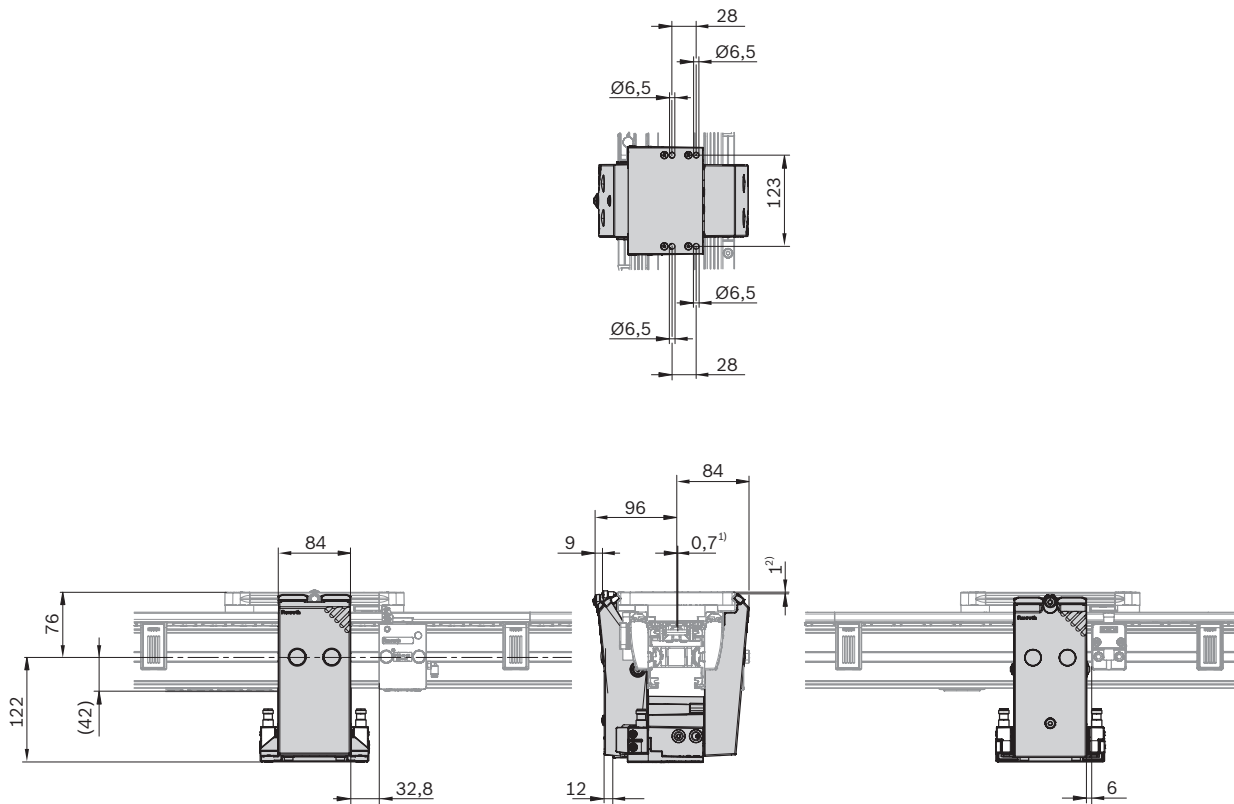
8



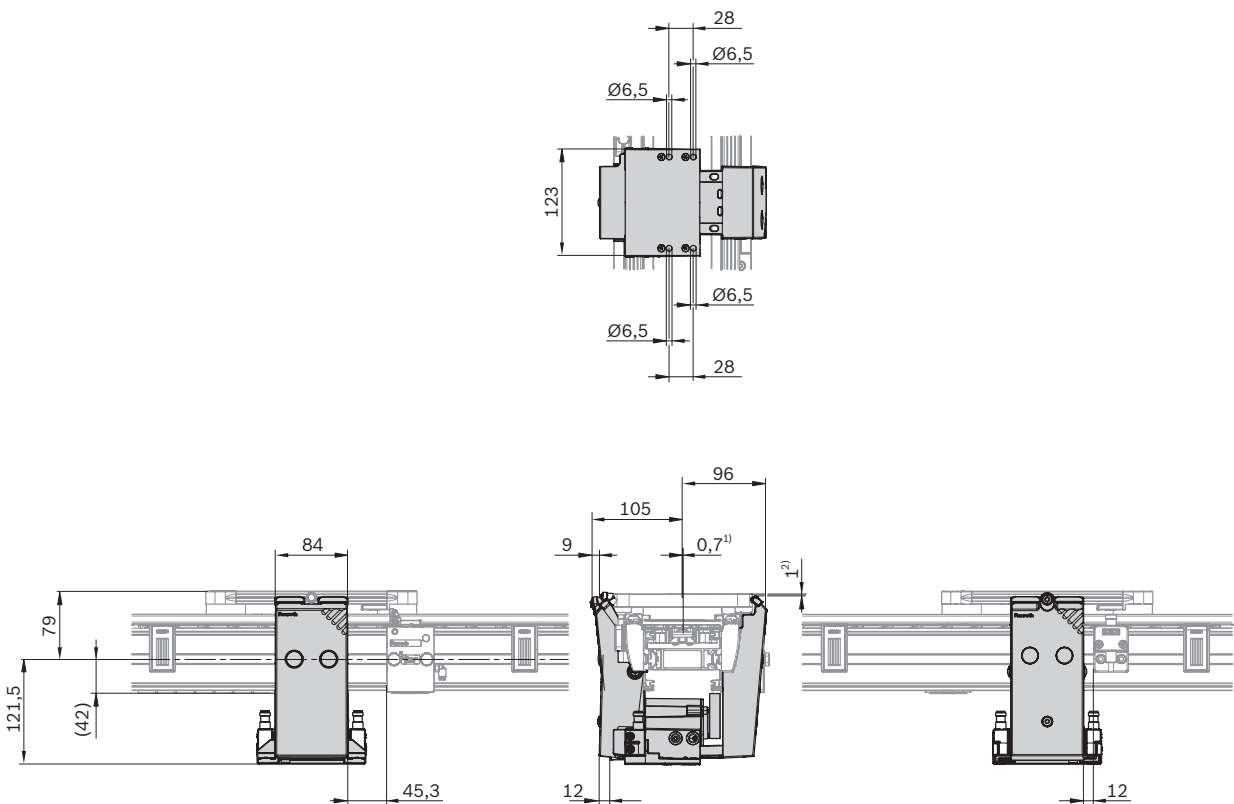
**Circuit diagram**

1 Not included in the scope of delivery

## VF 65



## VF 90



<sup>1)</sup> Center offset of the workpiece pallet when it is positioned

<sup>2)</sup> Height offset of the workpiece pallet when it is positioned

