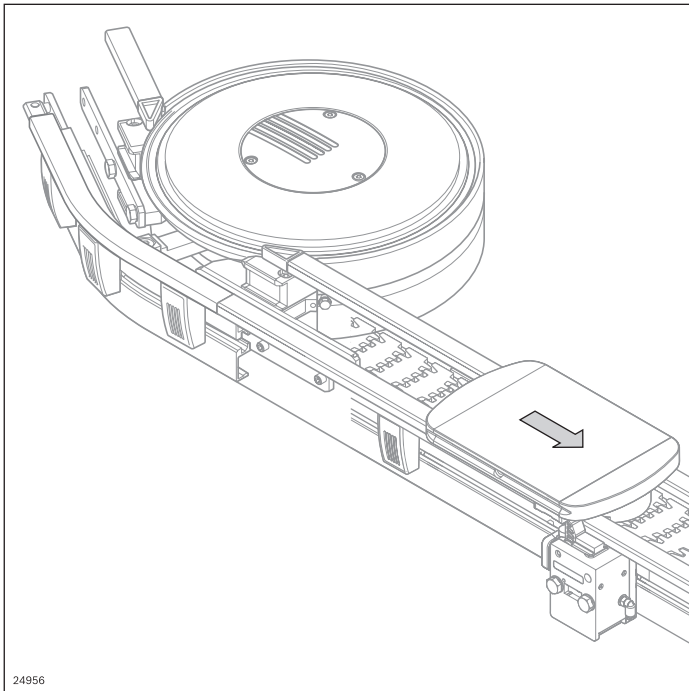


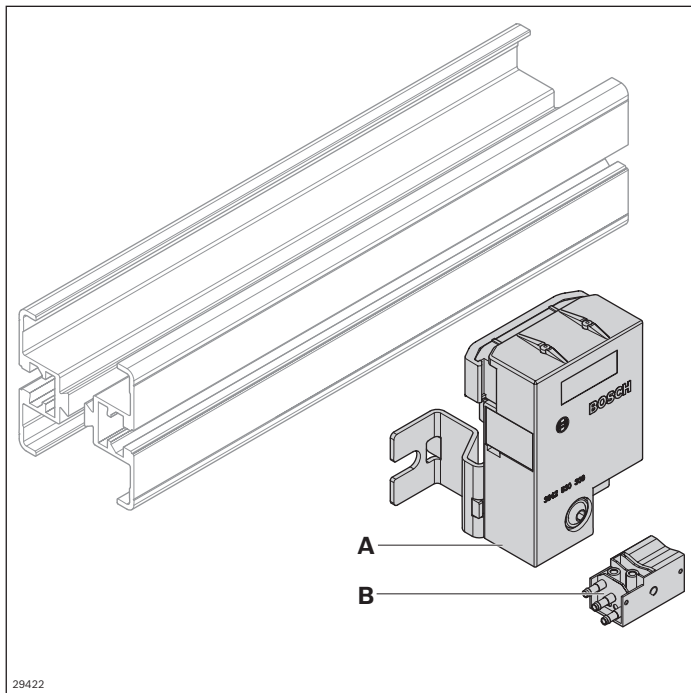
# Workpiece pallet system (WT)



- ▶ Secure transport of parts thanks to the modular design with comprehensive additional components
- ▶ Numerous components for control WT such as diverter, stopper, positioning unit, etc.
- ▶ Selection of wear pads with different materials
- ▶ Compatible with the identification system ID 15

24956

## Rocker system WT



The rocker can be used for area monitoring, accumulation pressure regulation, and workpiece pallet recognition. A query can be either made electrically with a proximity switch or pneumatically to directly convert the shutter actuation into a pneumatic signal. Simple, purely pneumatic accumulation pressure regulation can be established in conjunction with a stop gate VE 2/VF.

- Monitoring range: 60 mm

- The rocker does not protrude beyond the top edge of the workpiece pallet
- A sideways query on the workpiece pallet plate ensures the lateral guide profiles are not interrupted

### Accessories:

- Pneumatic cylinder switch **(B)** (3 842 532 151)
- 12 mm proximity switch, round with switching distance  $S_N > 4$  mm

### Scope of delivery:

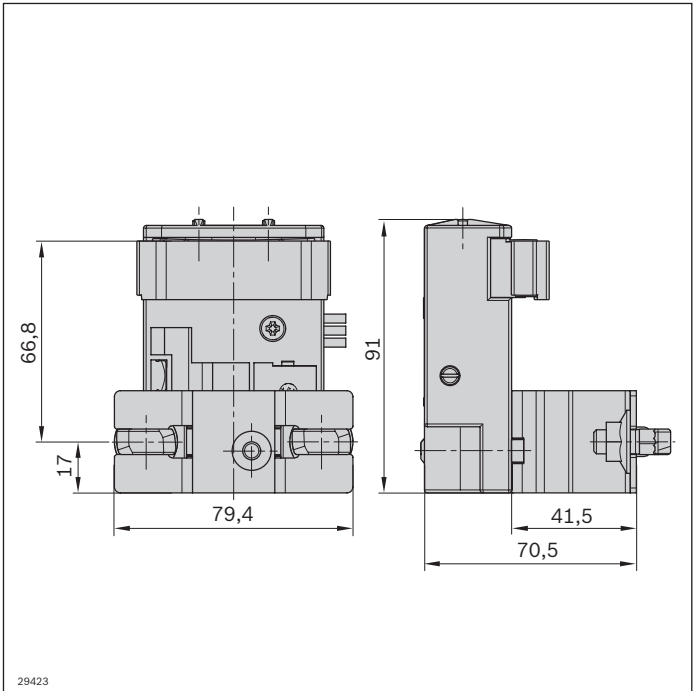
- Set incl. fastening material

### Condition on delivery:

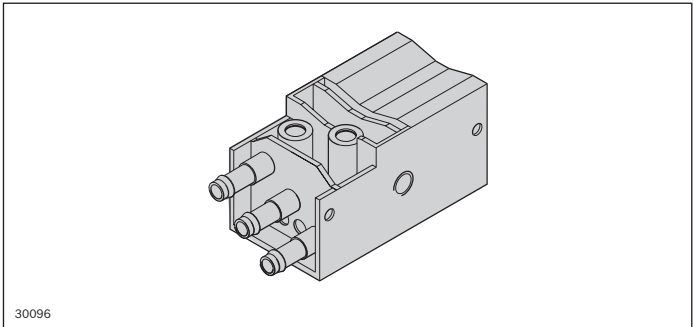
- Some assembly required

### Material:

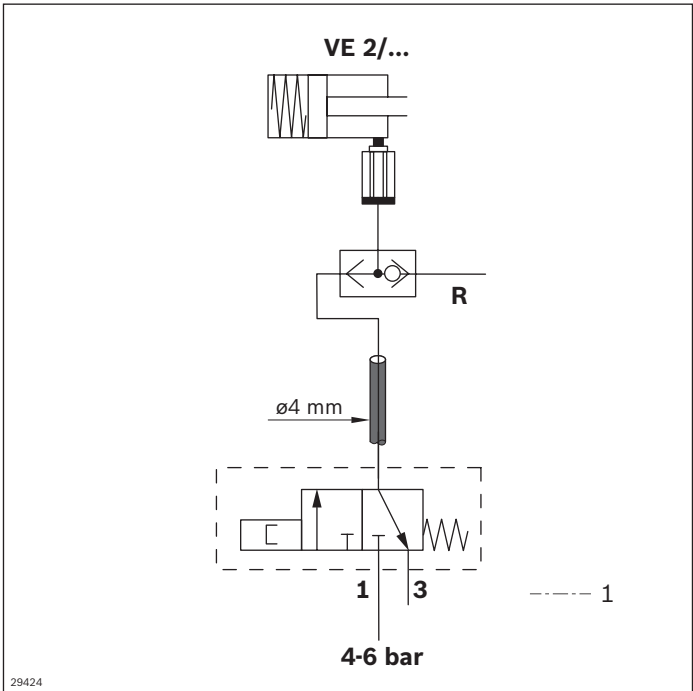
- Non-rusting steel 1.4301, PA



Rocker		No.
A	1 pc	3 842 547 464



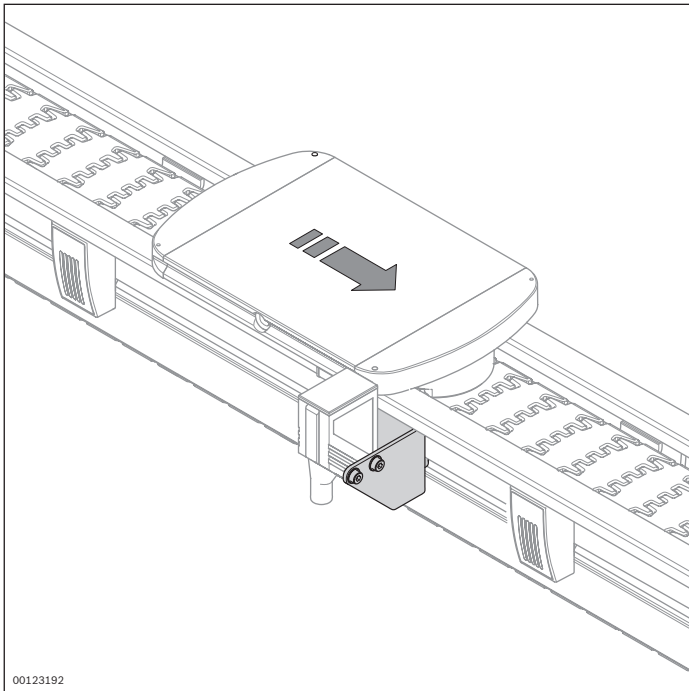
Pneumatic cylinder switch		No.
B	1 pc	3 842 532 151



Circuit diagram

1 Not included in the scope of delivery

## Identification systems ID 15 and ID 200



Assembly kits and mobile data tags for identification systems ID 15 and ID 200 for use in VarioFlow *plus* systems can be found in the RFID systems catalog (3 842 541 003).

